

A new species of Pseudophyllid from Brazil (Orthoptera)

S. DE TOLEDO PIZA JR.

Escola Superior de Agricultura "Luiz de Queiroz"
Universidade de S. Paulo —Piracicaba

INDICE

Pseudophyllinae	114
Bibliography	117

PSEUDOPHYLLINAE

Schochia veta sp. n. (Fig. 1 and 2)

Robusta. Corpus, pedes antennaeque castanea, oculi castaneo-obscuri, elytra ocraceo-viridia, alae badiae, ovipositor laevis, a medio usque ad apicem late nigro-nitido marginatus. Vertex rotundatus, frons ampla, in medio levissime depressa, oculi rotundati, scrobes antennarum marginibus haud tangentibus, fastigium verticis breve, angustum, triangulare, profunde sulcatum, apice obtuso, humillissime bituberculato, dimidium marginorum scrobium antennarum haud attingens, a fastigio frontis sat remotum. Articulus primus antennarum tuberculo dentiformi cum tuberculo simili sed minore articuli secundi contiguo, intus ad apicem armatus. Pronotum laeve, transversaliter sulcatum, sulco II quam sulcus I latiore, metazona prozona cum mesozona aequante, margine antico ad latera magis quam in medio tumescenti, super capitem rotundatim producto, metazona fortiter ascendenti, leviter rugulosa, in medio modice depressa, margine postico parum limbato, obtuse angulato-rutundato, in medio indistincte tuberculato necnon tuberculo dentiformi obtuso utrinque armato. Lobi laterales pronoti subquadrati, a sulco medio profunde excavati et in partes duas divisi, antica concava, margine regulariter rotundata, postica tumida, margine obtuse rotundata. Elytra lata, versus basin angustata, apice rotundata, area post-radiali area costali duplo fere latiore, illa a basi ad apicem sensim modice attenuata, margine antico primo subrecto deinde regulariter procurvo, margine postico leviter sinuoso, venis Sc et R basi distincte sectis sed ad quintam partem apicalem confluentibus, venis ceteris paulo distinctis, Rs ante medio oriente, extremitatem femorum posteriorum valde superantia et apicem ovipositoris attingentia. Alae subhyalinae, ocraceo-sordidae. Femora omnia lobis genicularibus bispinosis, spinis castaneis apice nigris, antica superne marginibus rotundatis inermibus, inferne spinis 3-4 intus armata; intermedia compressa, superne rotundata et inermia, inferne extus spinis 6; postica basi ampliata, inferne extus spinis 7-9. Tibiae anticae superne extus spinulis 2, inferne spinis 7-9 extus, 6 intus; mediae superne spinis 6 intus, inferne spinis 7 utrinque; posticae multispinosae, spinis superioribus inferioribus majoribus et magis numerosis. Lamina supraanalis rotundato-trucata, vix emarginata. Cerci cylindrici, modicissime curvi. Lamina subgenitalis profunde triangulariter incisa, lobis rotundatis et modice excavatis. Ovipositor parum recurvus, laevis.

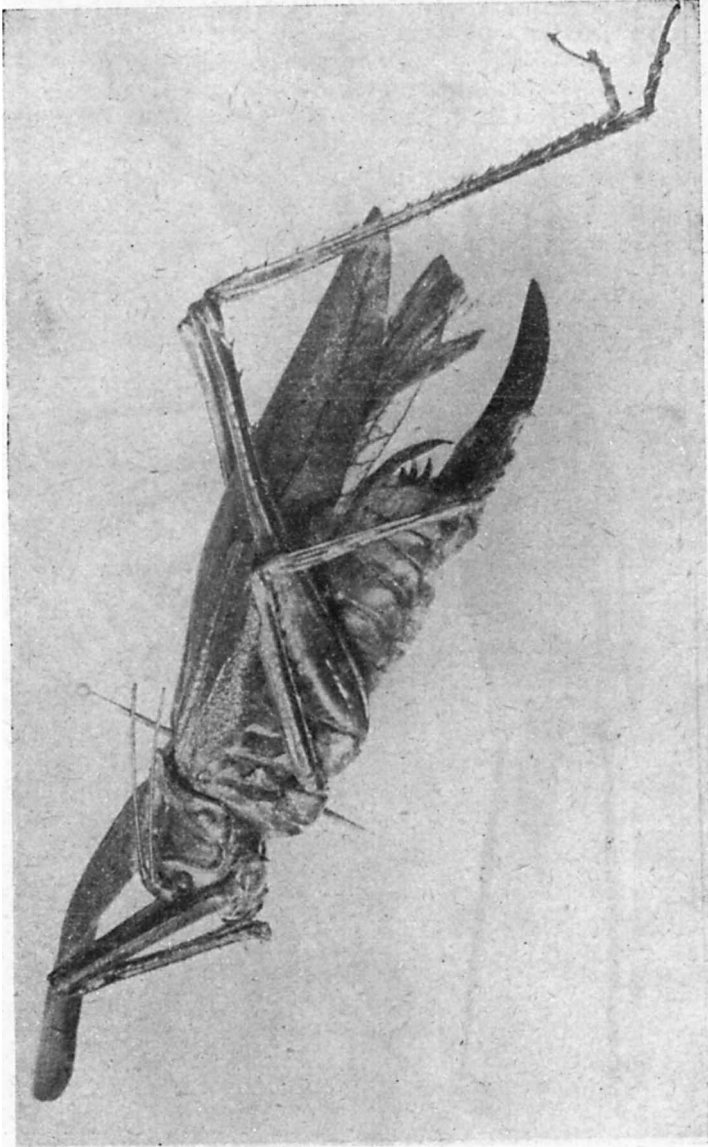


Fig. 1 — *Schochia veta* sp. n. (♀ — side view)

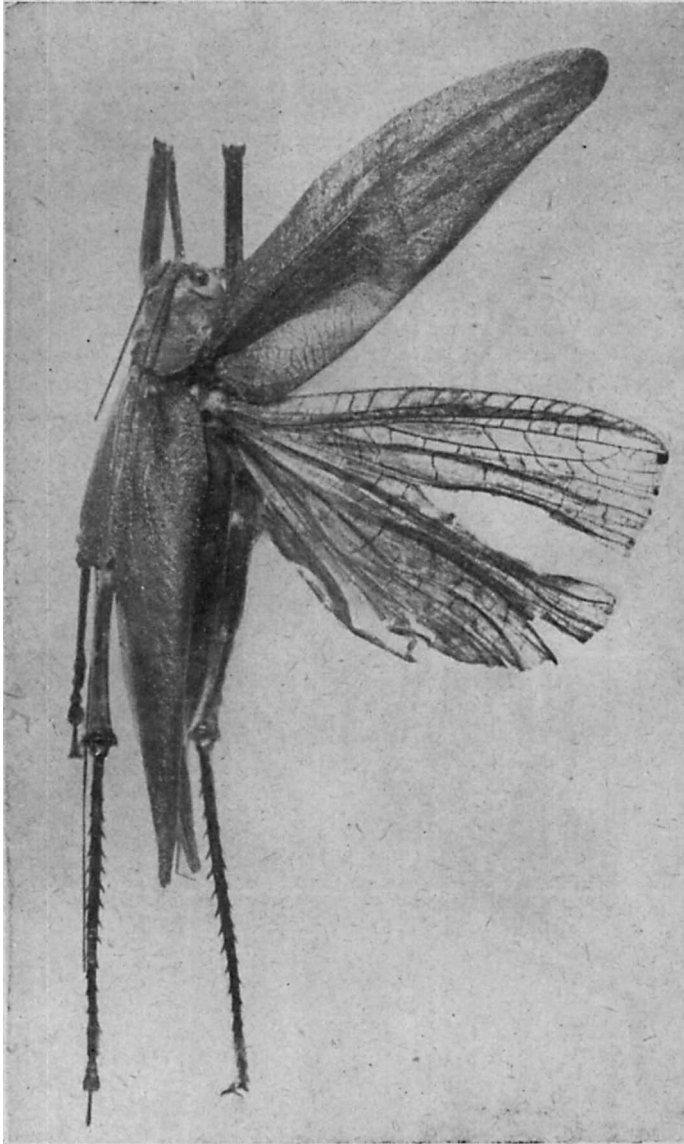


Fig. 2 — *Schochia veta* sp. n. (♀ — dorsal view)

Longitudo corporis	41 mm
Longitudo pronoti	10
Longitudo elytrorum	50
Latitudo elytrorum	14
Femora antica	17
Femora postica	38
Longitudo ovipositoris	22
Latitudo ovipositoris	3,5

Habitat: Cajuru, Est. of S. Paulo, Brazil.

Collector: Schwebel, 1910.

Type: One female individual, with the number 92.139 be-

longing to the Department of Zoology, S. Paulo, now in the Author's collection.

The three species of this genus may be separated as follows:

Synopsis of the species of Schochia

1. Articululus primus antennarum inermis;
metazona pronoti vix elevata *laevis* Brunner.
- Articululus primus antennarum dentatus;
metazona fortiter elevata 2
2. Margo posticus metazonae pronoti sub-
rotundatim truncatus, utrinque iner-
mis *viridis* Beier.
- Margo posticus metazonae pronoti ob-
tuse angulato-rotundatus, tuberculo
dentiformi utrinque armatus *veta* sp. n.

BIBLIOGRAPHY

- 1 — BEIER, M., 1954 — Rev. d. Pseudophylliden. Inst. Espan. de Entomol., pag. 281-283.
- 2 — BRUNER, L., 1915 — Ann. Carnegie Mus. 9, pag. 337.
- 3 — BRUNNER V. WATTENWYL, 1895 — Monogr. Pseudo-
phyll. pag. 105, Taf. 9, Fig. 47.

